

Learning Ladders



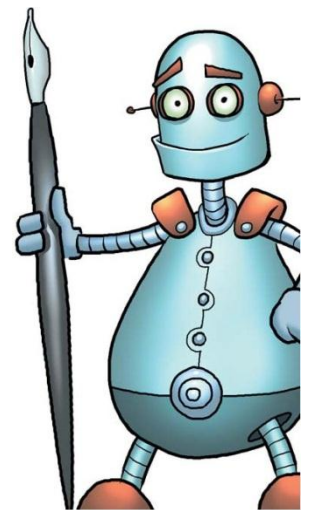
Assessment in the New National Curriculum - 'Life After Levels'

Gorsemoor is a school that has always ensured that we map your child's attainment level in order that we can show progress.

The Government decided that all schools would move away from levels and an average point score (APS) beginning in September 2015.

Over the last twelve months we have been evaluating and developing our own thoughts as how we move forward. So in September we begin our journey with a new system called **Learning Ladders**.

Every child from Year 1 upwards will have a separate Learning Ladder record booklet for Reading, Writing and Maths. The booklets have a different robotic character on the covers to help children know which booklet is for each subject.



The ladders in each area are made up of rungs, which equate to small steps of learning (learning objectives). Every rung must be assessed three times to make sure that the learning is deeply embedded or **MASTERED**. Teachers will initial these rungs as the terms progress. Each rung equates to a numeric

value which in turn will give us a score for each child in each of the three key areas of the curriculum.



This data will be entered into a program that will enable us to give a numeric value as to how your child is performing against pupils within the age range for their particular year group. The data is date stamped by the computer program. The table below shows the range for each year group.

Year Group	Score Range
Early Years (Reception)	0 -100
Year 1	100 - 200
Year 2	200 - 300
Year 3	300 - 400
Year 4	400 - 500
Year 5	500 - 600
Year 6	600 - 700

By the end of each year the average child should be aiming at a score as close to the rounded hundred. The table below shows finer detail.

Significantly below	Below	On Track	Above	Significantly above
-15 points	-10 points	Whole hundred	+10	+ 15

We are hoping that by Easter 2016 we will have enough expertise with our new system that you, as parents, will be able to log on

to your child's own score card and see progress for each ladder, which states the learning objective. We will send out more details of this in the spring term.



We are still supporting our teacher assessments with summative assessment tests in Reading and Maths, but the writing will be wholly teacher assessed against set criteria.

Until we are sure that all systems will work, you will continue to get two tracking reports and a final report in the summer term.

We are also changing the effort grades to attitude grades. The learning score for attitude reflects the extent to which your child has

- Shown interest
- Taken an active part in lessons
- Kept on task in lessons
- Completed homework e.g. reading or mathematical tasks.

1	Always shows an interest and commitment and work is completed.
2	Usually takes an active part in lessons and completes most work set.
3	On task in most lessons and completes most work set.
4	On task in some lessons and sometimes completes work.
5	Sometimes on task in lessons but does not usually complete work.

Please note: the new curriculum is harder so, at first, children will find it more challenging.

Please note: the new system of assessment ensures that each child can be taught at their level and makes accelerated progress possible.

- Teachers at Gorsemoor are assessing their children all of the time, constantly considering how well they have understood their learning and what the next steps are.
- Teachers will talk to the children about their next steps (in an age appropriate way) so they know the things they need to get better at doing.
- The learning ladder score will also translate into the schools SIMs levels of Emerging, Developing, Secure and Mastered so that you as a parent will have two ways of knowing where your child is for that year group and this information will transfer to other schools.
- Children's attainment and progress is shared with parents and carers at parents' evening in the autumn and spring terms. A tracking report is also issued towards the end of each of these two terms. In the summer term you will receive a written report but more concise than you have received in previous years as by then we hope to have the online report accessible.
- **Dates for your diary:**

Autumn: Sept 21st - 24th Parents consultation after school.
EYFS will arrange play and stay sessions early in the term.
November 27th Tracking report

Spring: W/b March 7th EYFS consultation, they will advise times.
March 11th Tracking report.
March 14th and 16th Evening parent consultation.
March 15th After school parent consultation.

Summer: July 8th Reports issued.
July 11th Open evening.